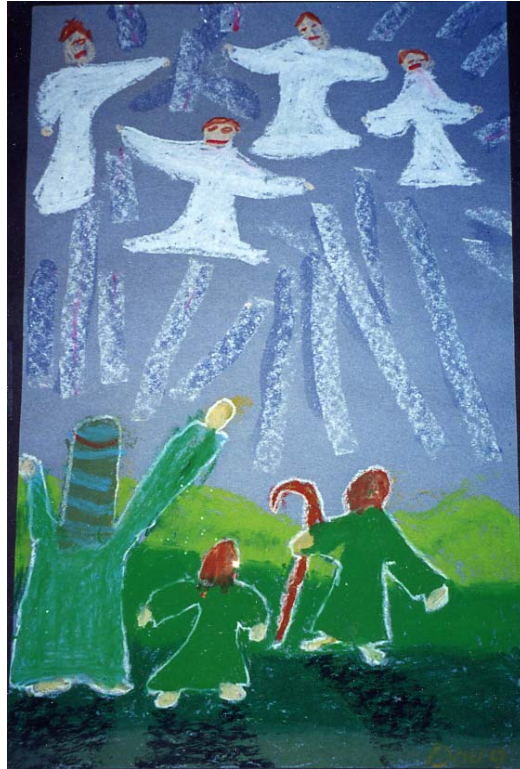


The Angels Appearing to the Shepherds



Materials:

Blue construction paper
Cray-pas or other oil pastel crayons

Procedure:

- 1) Use white Cray-Pas to draw the angels on a blue background.
- 2) Show the light (glory of the Lord) shining around them.
- 3) Make the shepherds below. See how the light shines on the shepherds? The white outline around the shepherds is an indication of the light.
- 4) This young artist wanted shadows behind the shepherds as well.

ALTERNATE METHODS:

- Use white paint to make the angels on a dark background. Cut the shepherds from black paper. Cut sheep from white paper. Arrange the shepherds and sheep on the picture and glue down.
- Use Cray-Pas (or other oil pastels) to make a host of angels on a light background. Then paint the deep blue sky around them, using thin poster paint.