

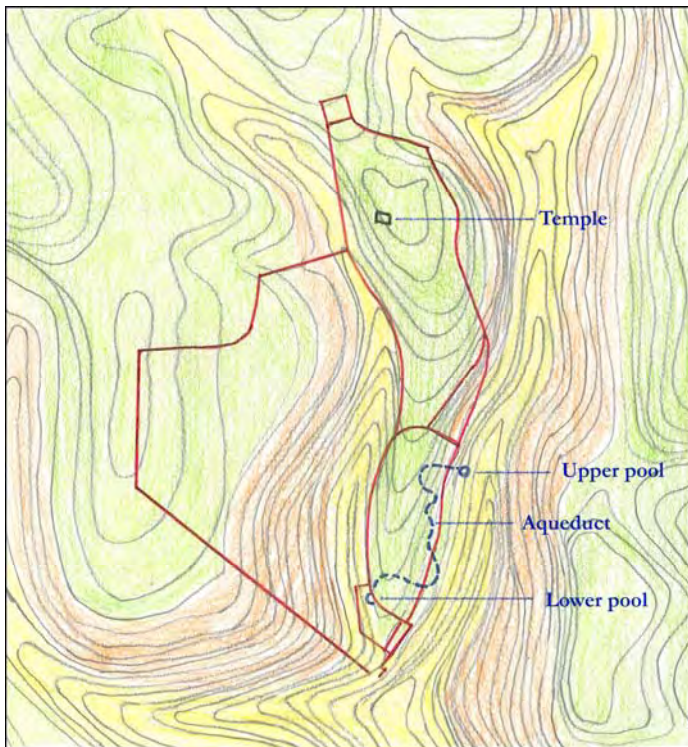
Make a Clay Contour Map of Jerusalem

2 Kings 18-19

Jerusalem, the capital city of Judah, was built in a hilly place. Two hills rose up inside the city walls with a valley between them, and two other valleys lay just outside the city walls. The fortified city walls towered above the valleys. The events in 2 Kings 18 and 19 took place just outside the city by an upper pool. The pool was a critical water source for Jerusalem. People brought the water from the pool outside the city walls into the city through an aqueduct which connected the pool outside the city walls with a lower pool inside the city walls.

In 2 Kings 18-19, three deputies from the king came out to meet Assyrian ambassadors at the aqueduct. The Assyrians delivered their message loudly in Hebrew. They wanted to catch the attention of the citizens who had lined up on the city walls above them to listen. Picture the setting—the Assyrian ambassadors with their army down in the valley, while the citizens crowded on the walls, trying to hear the threats and challenges to their kingdom.

Look at the contour map of the city walls of Jerusalem and the surrounding hills below. The map is colored to help you quickly see the main contour features. Valleys are yellow, steep hill slopes are orange, and hill tops are green. The city walls are red. The inner lines represent the original city, while the outer lines show the extent of the city during King Hezekiah's reign. The aqueduct is shown with a blue dotted line, connecting the upper and lower pools.



Use the larger map on the next page to make a clay model of the land Jerusalem was built on. Work directly on top of the map. Start by building up the hills on the green areas. Create steep hillsides as shown. Finally, make the walls of the city. Use the map on this page to help you as the lines on the larger map will be buried.

Imagine what it must have been like standing down in the valley and looking up at the people lining the walls who were trying to hear the threats against them. Or imagine being up on the walls and seeing the Assyrian army approaching in the valley below.

CONTOUR MAP OF JERUSALEM

