

Nebuchadnezzar's Dream and the Five Churches

Daniel 2; *True Christian Religion* 760, 762

Discover king Nebuchadnezzar's dream and its meaning by cutting out, assembling, and arranging five cubes to illustrate the story.

King Nebuchadnezzar saw a great statue with a head of gold, chest and arms of silver, belly and thighs of bronze, legs of iron, and feet of iron and clay. A rock cut without hands struck the statue and destroyed it. The Writings tell us that the statue pictures five churches which have existed on earth: the Most Ancient Church, the Ancient Church, the Israelitish Church, the Christian Church, and the New Church, the crown of all the churches. Set up the statue with the rock under the feet, then sequence the blocks to show the stages of human development, the seasons, the metals in the statue, the times of day, and the stories in the Word that tell of each church.

Directions

1. Print all five cube templates on stiff paper.
2. Trim off the grey sides.



3. Identify the slim tab on one end of the template. Fold it underneath. This will be used later to help attach the sides.

4. Fold along all lines (both ways—forward and backward) to make creasing easier. *Tip: Run a fingernail along the folds create sharp creases.* Unfold the paper.



5. Cut along the vertical side lines (as shown) **but do not cut the center squares.** They will be the face of your cube.

6. If needed, trim the edges slightly so the template forms a cube.
7. Fold in the sides along the center line so they meet in the middle.



8. Tuck the slim tab underneath and tape the middle section together.

9. Gently end the cube into a square tube shape.



10. On one side, fold the plain flaps inwards to close the cube. Tape the flaps to secure the side.



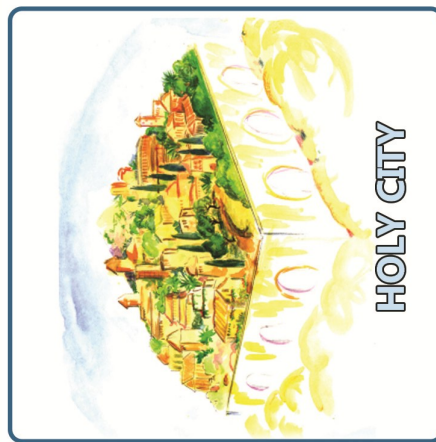
11. Flip the cube over and repeat on the other end, making sure the picture side is facing up.



12. Optional: Tape each edge of the cube to keep it sturdy.



New Church



RESURRECTION



STONE



NEW DAWN



ETERNAL SPRING

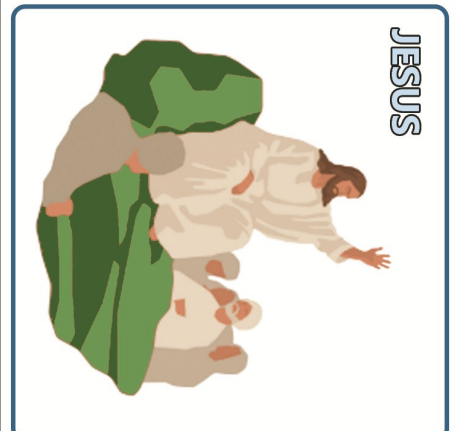
CUT off grey



OLD AGE

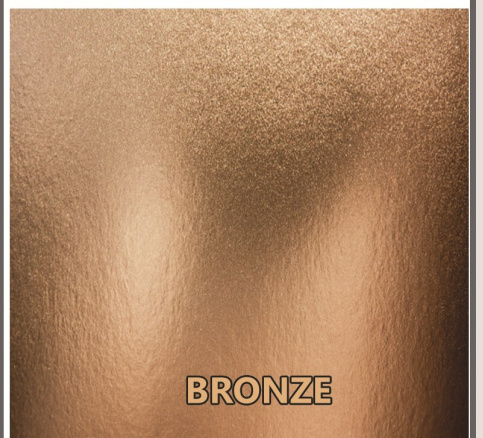
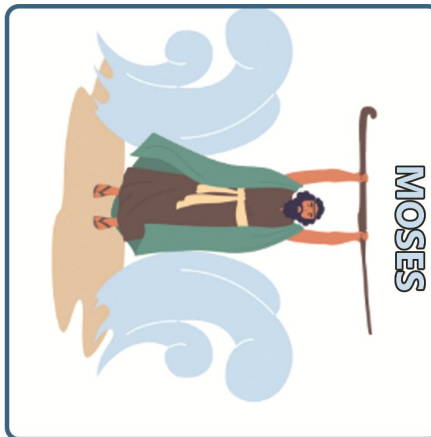


IRON

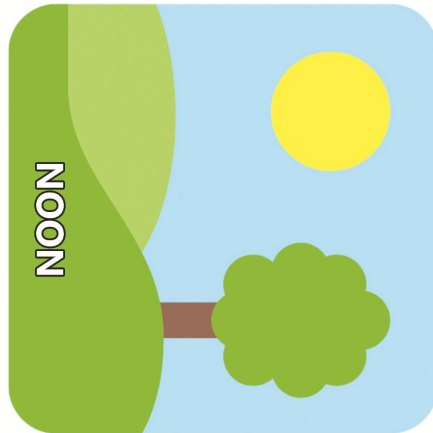


Christian Church

CUT off grey

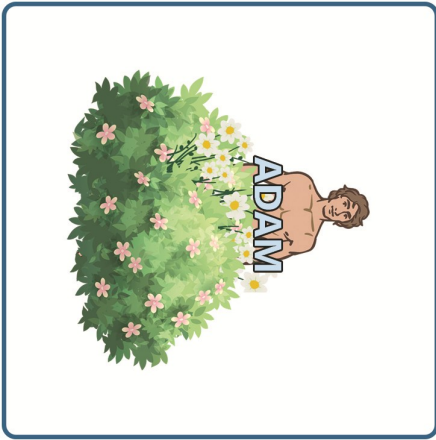


Israelitish Church



Ancient Church





INFANCY



Most Ancient Church

Answers

This table shows the correct order of the blocks from each side. Read each column from the top down to see the correct order.

Statue	Head	Chest & Arms	Belly & Thighs	Legs	Rock
Material	Gold	Silver	Bronze	Iron	Stone
Church	Most Ancient	Ancient	Israelitish	Christian	New Church
Time in life	Infancy	Childhood	Adulthood	Old age	Resurrection
Time of day	Dawn	Noon	Afternoon	Night	New dawn
Season	Spring	Summer	Autumn	Winter	Eternal spring
Story in the Word	Adam	Noah	Moses	Jesus Christ	Holy City