

General Church Education



# The Fourth Day

Genesis 1:14-19

## Lesson 4

Youth Journey Program

# Creation: Reflection of God

Level C: For ages 11-14 years

# Teacher Background

## Creation: Reflecting God through Correspondences

### A Key for Understanding the Word

There is a New Church teaching that, “The Word of God is like a body with a living soul” (*Arcana Coelestia* 1408). Many readers have sensed this deeper level of meaning within the words and images of the Bible.

God wrote His Word so that every image contains multiple levels of meaning. The literal meaning focuses on the natural, physical world. A deeper symbolic meaning focuses on the world of the spirit, the world of the human mind. The relationship between the two levels is called “correspondence”. Natural images and symbols “correspond” to spiritual qualities.

We often make this connection between levels without thinking about it. For example, we may talk about not “muddying the waters”, or say that a child is “testing the waters”. When we say “not muddying the waters” we are not talking about water at all; we are saying that false or misleading ideas should not be brought into a situation. Similarly, a child “testing the waters” is experimenting with his or her behavior to see how others react. These sayings make connections between the way true ideas work in our minds with the way water works in the natural world.

Jesus made connections like this in His conversations with people. To a woman at Jacob’s well, He said, “Whoever drinks of the water that I shall give him will never thirst. But the water that I shall give him will become in him a fountain of water springing up into everlasting life” (John 4:14). Jesus was associating the true spiritual ideas He came on earth to teach with water. The connection is in how they are useful—how they work in our lives. True ideas from the Word cleanse our thoughts just as water cleanses our bodies.

Sometimes these connections are harder to see in the stories of the Old Testament. The key, according to the Heavenly Doctrine for the New Church, is this concept of correspondences. Correspondences allow us to see more than the general allegory of the human journey to the “promised land” of heaven. They help us see who God is and what He intends for us in specific ways. A knowledge of correspondences can help us gain fresh insight into the stories of the Old Testament.

This is true for the creation story. The Heavenly Doctrine explains creation in terms of a person’s step-by-step spiritual progress along the path to heaven. Each “day” of creation pictures a new level of personal development. The seventh day is a beautiful picture of the restful state of heaven—a state free from the struggles against selfishness that we all deal with in this world.

The spiritual meanings of the days of creation are interwoven throughout this lesson. We hope they bring this familiar story to life in new ways.

Correspondences are natural truths in which spiritual truths are reflected as in a mirror. *Arcana Coelestia* 9300



# The Fourth Day Level C

Genesis 1:14-19

Ages 11-14

**Life Focus:** The Word and the created world reflect the Lord, the Creator.

**Lesson Focus:** The Lord’s laws of order protect us on the path to heaven.

**Reading:** Then God said, “Let there be lights in the firmament of the heavens to divide the day from the night; and let them be for signs and seasons, and for days and years; and let them be for lights in the firmament of the heavens to give light on the earth”; and it was so. Then God made two great lights: the greater light to rule the day, and the lesser light to rule the night. He made the stars also. God set them in the firmament of the heavens to give light on the earth, and to rule over the day and over the night, and to divide the light from the darkness. And God saw that it was good. So the evening and the morning were the fourth day (Genesis 1:14-19).

<b>Lesson 4</b>		<b>Materials Supplied</b>	<b>Materials Needed</b>
<b>1. Getting Started</b> (2-3 minutes)	<b>Welcome Warm-up Activity</b>	<b>Video: Watch the Sky, See the Sun or Moon</b> directions p. 4 choice of movies at <a href="http://www.bitly.com/WondersOfCreation">www.bitly.com/WondersOfCreation</a>	computer or other viewing device
<b>2. Focus on the Word</b> Use all activities (5-7 minutes)	<b>Read the Word</b>  <b>Talk About It</b> discuss the reading	see <i>Reading</i> above  <b>Talk About It</b> discussion guide p. 4	
<b>3. Learn by Doing</b> Choose 1-2 activities (15-20 minutes)	<b>Discussion</b> discover ways of “seeing”; identify the kinds of sight you are using in a variety of situations	<b>Seeing with Spiritual Eyes</b> directions p. 5 <i>Seeing with Spiritual Eyes</i> p. 7	an object to look at (e.g. ball, computer), scissors
	<b>Service Project</b> create a box to give away; fill it with uplifting quotes to spread sunshine to a person in need	<b>Sharing Sunshine Box</b> directions pp. 5-6 <i>Sharing Sunshine Box Folding Directions</i> p. 8 <i>Sunshine Sharing Box Lid, Base, Quotations</i> pp. 9-11	stiff paper (yellow or orange if possible), tape, scissors, pens or pencils <i>optional:</i> fancy pens or markers such as gel, glitter, etc.; individually wrapped orange or yellow hard candies to share, e.g. butterscotch
<b>4. Wrap It Up</b> (2-3 minutes)	<b>Take the Message Home</b> introduce quotation for the week	<b>Take Home Cards</b> p. 12	

# 1. Getting Started

<b>Welcome</b>	<b>Watch the Sky or Look at the Sun or Moon Video Activity</b>
<b>Warm-up Activity</b>	Witness the night sky moving before you in a time-lapse video, or take a close-up look at the sun or moon. Choose from among a playlist at <a href="http://www.bitly.com/WondersOfCreation">www.bitly.com/WondersOfCreation</a> . Encourage discussion as you watch. For example, <ol style="list-style-type: none"> <li>1. What catches your eye?</li> <li>2. Compare the light of the moon with the light of the sun.</li> <li>3. Could we exist if there was no sun? What if there was no moon?</li> </ol>

# 2. Focus on the Word

**Read**                    **Genesis 1:14-19**

**Talk About It**            **The sun is a fiery-looking ball at the center of our solar system. Without the sun’s light and heat the earth would freeze. It would be so cold no living things could exist.**

**Just as the heat and light of the sun are necessary for life in the natural world, the Lord’s love and wisdom form the basis of all spiritual life.**

**His great love for us is like the warmth of the sun. His wisdom is the light by which we see the path to heaven. He shares His love and wisdom with us in His Word.**

**In heaven, the warmth of the Lord’s love and the light of His wisdom form the sun the angels see each day.**

**We receive the Lord’s love in greater measure when we turn toward Him—just as the earth warms up as it turns toward the sun. When do we especially experience and receive the Lord’s love? When we do what He teaches.**

**The moon circles the earth. We see it best after dark. What is the source of the moon’s light?** Sunlight reflecting from its surface. Similarly, the Lord is with us during our dark times. We see Him dimly reflected in true ideas we know, but we do not feel the warmth of His love.

**Like light from the moon, our faith guides us toward heaven during times when we do not feel the Lord’s love (the warmth of the sun).**

**What is faith? How can it help us?** Faith is knowing what is true and how to act based on the Word. It helps us *do* the right thing even when we don’t *feel* like it. Faith keeps us on the path to heaven and holds our lives in order. Faith is especially important when we feel as if the Lord is far away.

**The two “great lights” (sun and moon) were for “signs and seasons.” What are spiritual seasons?** Ups and downs. Our “ups” are when we feel excited about what we’re doing, in a sunny frame of mind. “Downs” are when we don’t feel connected with the Lord. These states feel dark.

**The spiritual sun and the moon (the Lord’s love and our faith) are important in our lives. They light up and protect our spiritual path, making it possible for us to steadily move toward life in heaven.**

# 3. Learn by Doing

Choose one or two activities

**Choice**

## Seeing with Spiritual Eyes

The eye is a camera that sends images to the brain; the brain makes sense of what the eye sees. The mind processes the images and decides where to look, what to focus on, how to respond. The mind is the part of a person that is most closely connected with the spirit. At birth, our minds are most-ly concerned with the world around us. As our minds develop they have the potential to open toward the Lord and let in the light of heaven. The amount of heavenly light that shines into (or is blocked out of) our minds depends on our choices. Students will look at various situations and think of ways a person could respond if seeing the situation through “wordly” eyes, “spiritual” eyes, or in spiritual darkness.

1. When do you see best—in daytime (sunlight) or nighttime (darkness)? Why is this?
2. Choose an object for everyone to look at. What do you see? Everyone sees things slightly differently. What we see depends on what we know and understand and how our brain interprets what we see.
3. So what *actually* sees—the *eyes*, or the *mind*?
4. Let’s think about the kind of “sight” we have for what goes on around us. Imagine an egg broken on the ground—how might you interpret it? (waste, clumsy, young child, mess, accident, etc.) Which of these thoughts come from the spiritual light of heaven? Which come from worldly light? Which come from spiritual darkness?
5. We are going to look at a variety of situations and brainstorm ways a person could respond in the light of heaven, in the light of the world, or in spiritual darkness.
6. Hand out cards from p. 7. Call on students to read a card. Possible responses that would come from seeing the situation in the light of heaven, the light of the world, or spiritual darkness.
7. Which is more important—*what* we see or *how* we see?
8. What we love determines what we see. Angels may see something as beautiful, while evil spirits may see the same thing as ugly. How do you know what kind of sight you are using to see?

**Choice**

## Sharing Sunshine Box

The sun is a reflection or image of the Lord’s love for all people. It can also be an image of our love for the Lord and for our fellow human beings. Students will create a box to share the Lord’s love with another person.

1. Can you describe your experiences of sunshine. What does it feel like? What are its qualities? In what ways is sunshine like love?
2. Because love is a spiritual quality, there isn’t a limited amount of it.

### Materials Needed

copy of *Seeing with Spiritual Eyes*, p. 7, an object to look at (computer, basketball, knitting, etc.)

### Prepare in Advance

Print *Seeing with Spiritual Eyes* (p. 7) and cut apart.

### New Church Concept Heavenly Sight

There are three heavens...a central or third heaven, an intermediate or second one, and an outermost or first.

The inner nature of angels determines which heaven they are in.

Heaven’s sun is the Lord; light there is the divine truth and warmth the divine good. (Heaven and Hell 29, 33, 117.)

People in heaven turn toward the Lord as the sun...people in the spiritual kingdom turn toward Him as the moon. People in hell turn toward the darkness that is on the opposite side, and so turn away from the Lord. We turn away from the Lord in spirit if we are caught up in self-love and love of the world, and toward Him if we are in a love for Him and for our neighbor (Heaven and Hell 123).



## Sharing Sunshine Box *continued*

3. While sunshine is natural and physical, we can see similarities. If someone else is in the sun with you, it doesn't mean you have any less of it (unless you are in their shadow).
4. The same is true of love. If you have younger siblings, your parents may have told you when they were born that it wouldn't mean that they would love you any less. They might well have less time and attention to spend with you, though! Time and attention are limited because of the laws of the natural world. Love is not.
5. The Lord's love, especially, is infinite. Listen to a 3 part definition of the Lord's love: The essence of God's love consists of three things. He loves others outside of Himself. He wants to be conjoined with others. He wishes to make others happy from Himself. (See *True Christian Religion* 43:1.)
6. You are going to make a box to help spread the sunshine of the Lord's love to someone who might not be feeling His warmth right now. If you know of someone who is struggling—physically or emotionally—and could use a box, you may wish to take it home and give them yourself. If you don't have someone in mind, give your box to a pastor to give to someone who is sick or hurting.
7. Distribute pp. 8-11 along with scissors and tape.
8. Read the quotations on p. 11 aloud together. Then have students assemble the boxes and make the quotation cards.
9. *Optional*: distribute candies to put in the boxes.

### Materials for Each Student

3 project pages printed on stiff paper—yellow or orange if possible; scissors; tape; *optional*: selection of fancy pens and markers such as gel, glitter, etc.; individually wrapped orange or yellow hard candies to share, e.g. butterscotch

### Prepare in Advance

copy pp. 9-11 onto stiff paper. Create a sample to show students. Ask your Pastor if they will distribute boxes on pastoral care visits.

### Activity Hint!

If time is limited, have 2 students work together on 1 box, one putting together the lid and one the base. Each can create 1-2 quotation cards to put inside.

## 4. Wrap It Up

### Closing

Spiritually, how does the sun guide us on our path to heaven? (the spiritual sun is the Lord showering us with His love and wisdom in His Word.)

The moon's cold reflected light is like \_\_\_\_\_? (Our faith. Faith shows us the right thing to do even when we don't feel like doing it. If we do what our faith tells us to, the sun will return and we will feel the Lord's warmth.)

### Take the Message Home

Read this quotation aloud: "As surely as the sun rises, the Lord will appear" (Hosea 6:3). Close your eyes and imagine standing in the sunshine. What does it feel like physically? How does it make you feel emotionally? Now, still with eyes closed, think about the fact that you are standing in the presence of the Lord's love. We are always surrounded by the Lord's love for us, even when we do not feel it.

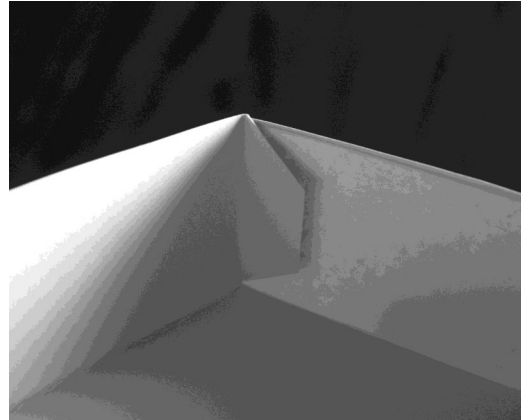
**Give Take Home Cards (p. 12) to the students as they leave and suggest they put them up somewhere they will see them this week to remind them of the certainty of the Lord's love.**

<p>It's a beautiful day in spring.</p>	<p>You are the first to arrive on the scene of an accident.</p>	<p>You feel hurt by something another person said about you.</p>
<p>Your brother/sister takes your favorite shirt without asking.</p>	<p>You hear your friend got the job you wanted and you did not.</p>	<p>You lent your laptop to a friend. It was returned broken.</p>
<p>Your parents will not let you go to a movie that "everyone else" is seeing.</p>	<p>Your friend receives a reward or prize you had hoped for.</p>	<p>You have free time. A parent asks you to do something for him/her.</p>
<p>You get a good grade on an assignment.</p>	<p>You are nervous about a speech you are giving.</p>	<p>Your friend misses a goal kick, and your team loses the game.</p>
<p>You see two people arguing.</p>	<p>You hear a baby cry.</p>	<p>You receive an unexpected gift.</p>

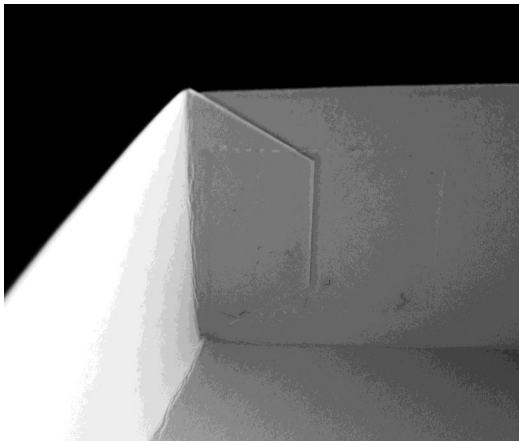
## Sharing Sunshine Box Folding Directions



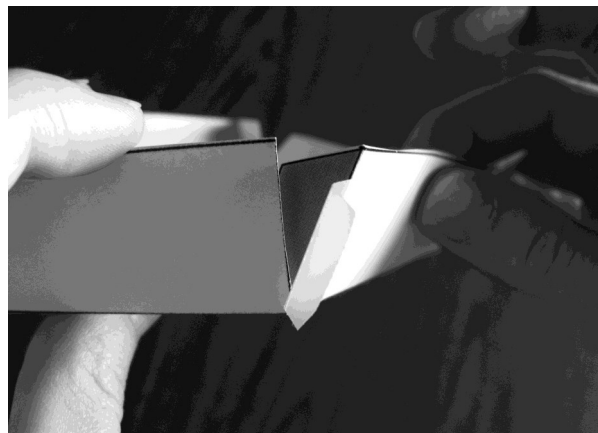
1. Cut out the lid of the box. Fold the sides down by pinching in the center of the line above the quotation and creasing along the lines to the edges.



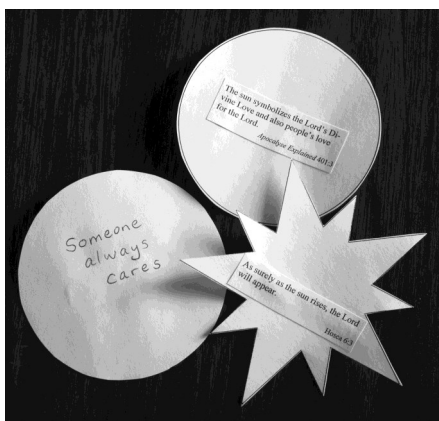
2. Fold the shaded flaps in and tuck them under the sides of the lid. Tape the corners of the box together.



3. Tape the flaps down on the inside of the box lid.



4. Follow steps 1-3 with the box base as well.

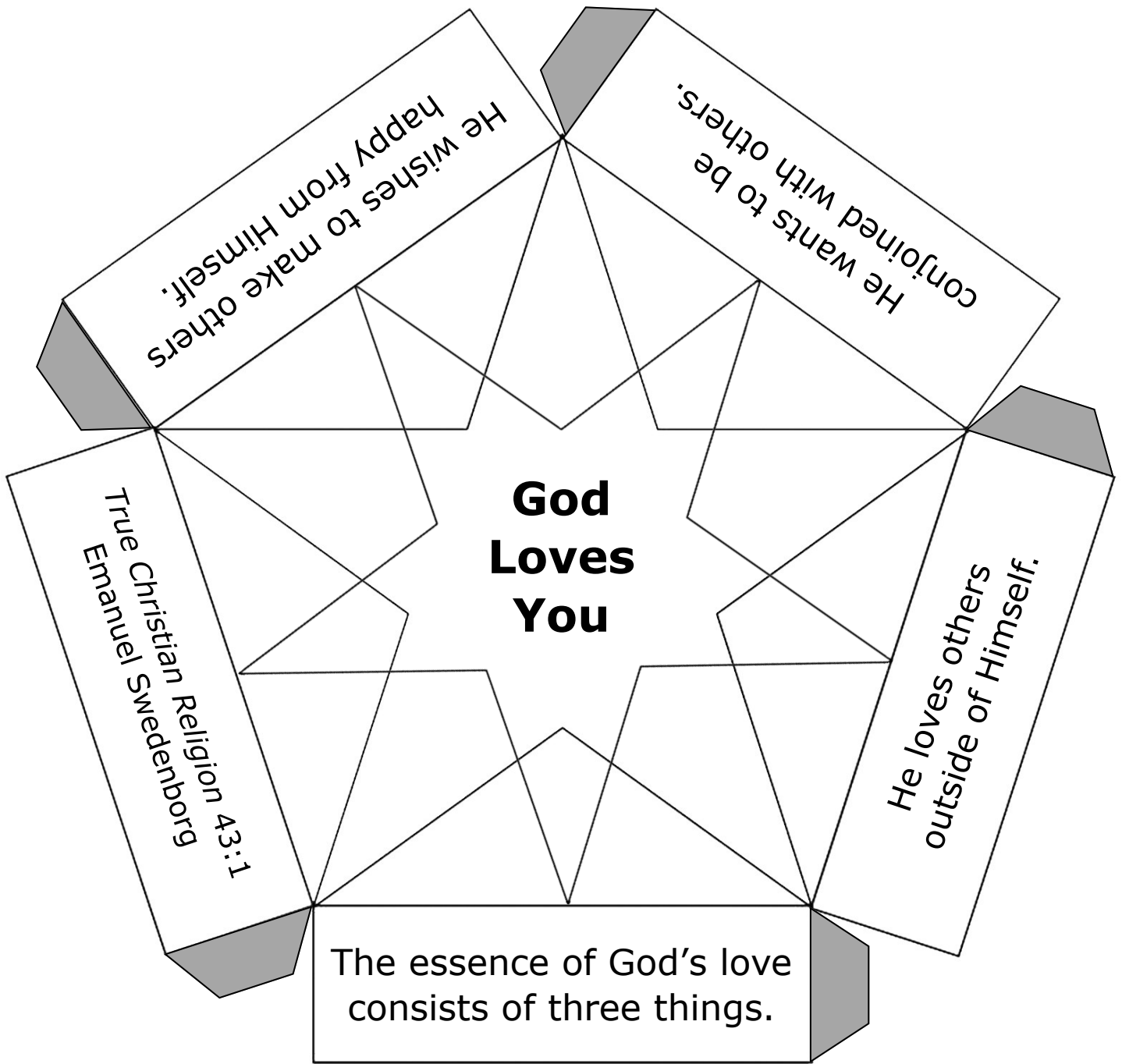


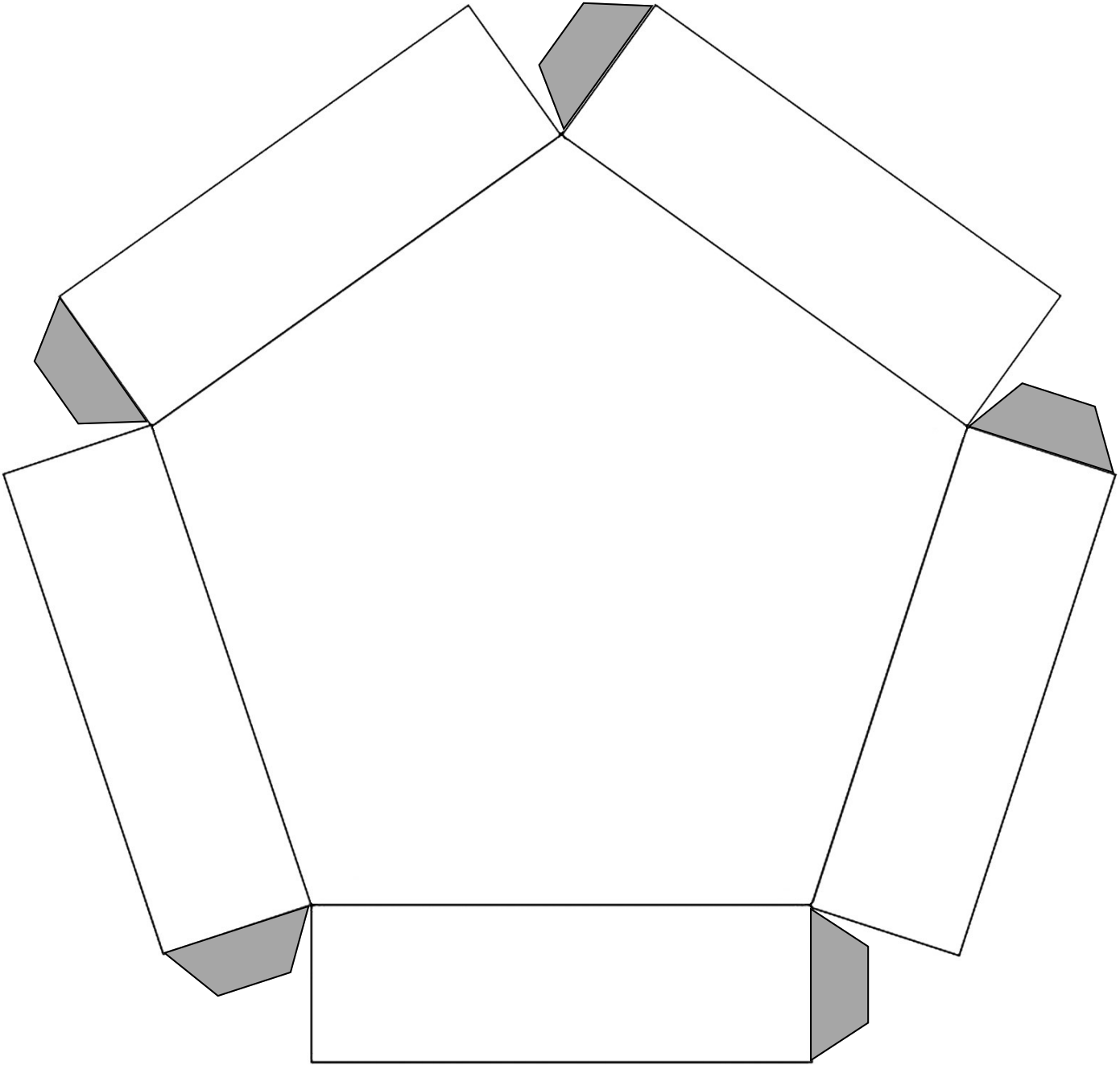
5. Follow the instructions on the Quotations Page to create quotation cards.



6. Put the quotation cards in the Sunshine Box. *Optional:* add a few sunshine colored candies. Have a "piece of sunshine" yourself and think about how the Lord loves you while you eat it! Have a second piece and think about how you can spread the Lord's love to other people!

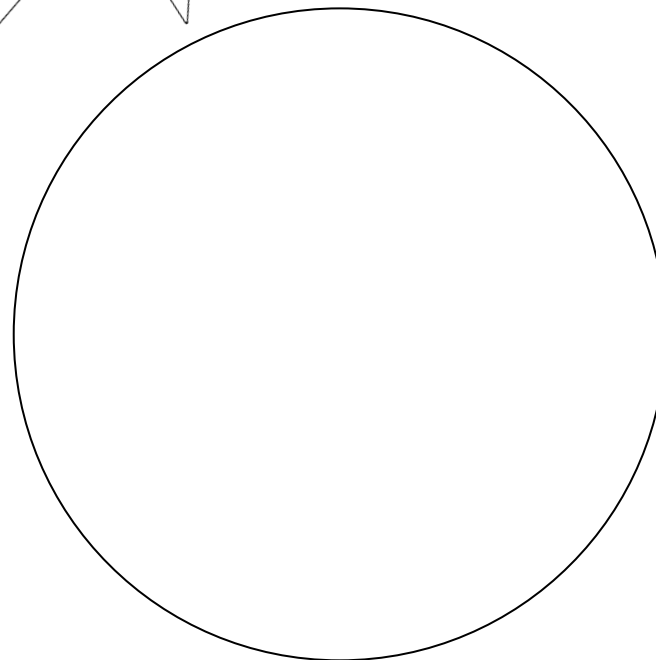
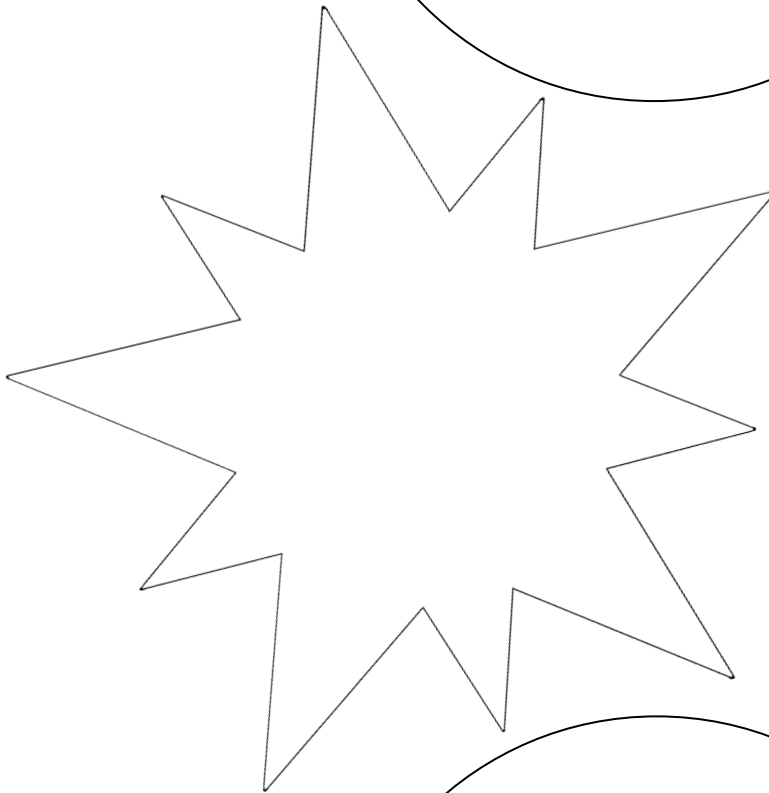
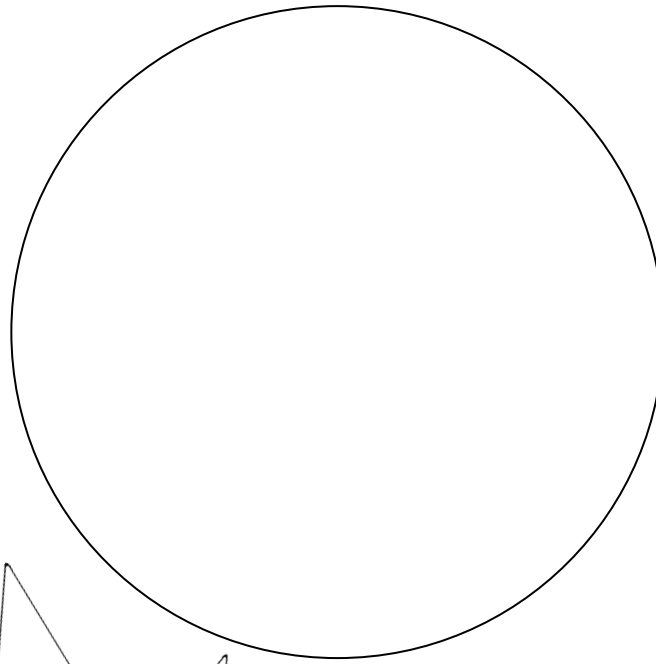






Sharing Sunshine Box Base

1. Cut out the shapes below. Choose quotations to cut out and glue onto the shapes. Choose quotations that you find inspiring and comforting.



2. Write a personal message on the other side of one or more of the shapes. Possible messages include "The Lord loves you." "Keep going. Someone always cares", etc.
3. If you have time, add decorations to the cards.

The Lord God is a sun and shield; the Lord will give grace and glory; no good thing will He withhold from those who walk uprightly.

Psalm 84:11

The sun shall no longer be your light by the day...for the Lord will be to you an everlasting light.

Isaiah 60:19-20

As surely as the sun rises, the Lord will appear.

Hosea 6:3

God makes His sun rise on the evil and on the good, and sends rain on the just and on the unjust.

Matthew 5:45

The sun symbolizes the Lord's Divine Love and also people's love for the Lord.

*Apocalypse Explained* 401:3

Let those who love Him be like the sun when it comes out in full strength.

Judges 5:31

He will make your righteousness shine like the dawn, the justice of your cause like the noonday sun.

Psalm 37:6

The righteous will shine forth like the sun in the kingdom of their Father.

Matthew 13:43

The Lord is in the center of the sun that is in the spiritual world. He flows from that sun, by means of heat and light, into the whole spiritual world and all the people there.

He also flows, from the spiritual sun with the same heat and light, into the souls and minds of people in the natural world.

*True Christian Religion* 641:2

**Take Home Cards**  
Make a copy for each student.



*As surely as the sun rises,  
the Lord will appear.*

*Hosea 6:3*



*As surely as the sun rises,  
the Lord will appear.*

*Hosea 6:3*